

**XSR | Xm30**

SUPER HIGH OUTPUT  
SEMI RECESSED MULTIPLE

PROJECT \_\_\_\_\_

TYPE \_\_\_\_\_

SPECIFICATION \_\_\_\_\_

- 120 V
  - Non Dimming
  - 50,000 hours (L70)
  - Integrated driver
  - UL certified
  - RoHs-compliant
  - Dry location rating
  - Contain no lead or mercury
  - Individually specifiable optics
  - Field- adjustable gimbal rings for hot aiming
  - Modules are field-replaceable for easy maintenance and design changes; no tools needed
  - Designed for new construction ceilings only.
  - Rated for IC and non-IC use; spray foam rated\* option available
  - VioLight and \*MonoWhite color rendering enhancements available
  - \* 90+ High CRI available.
- To order, replace 'K' in CCT designation with 'h' in code below



**NOTE: CONTAINS DISCONTINUED MODELS**  
**Consult factory for availability of XSR12 ONLY**

\*Consult factory for lead time and availability

# XSR11 | Xm30

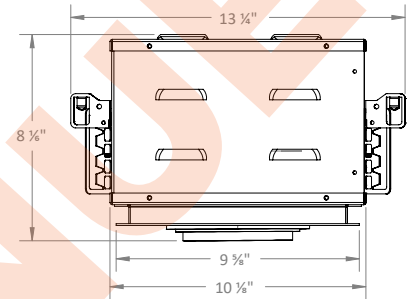
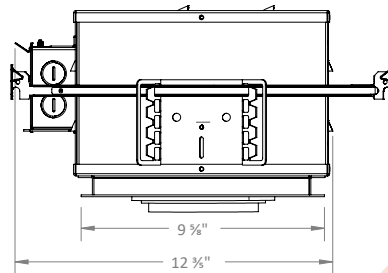
SUPER HIGH OUTPUT | 1-HEAD  
SEMI RECESSED MULTIPLE

PROJECT \_\_\_\_\_

TYPE \_\_\_\_\_

SPECIFICATION \_\_\_\_\_

- Max Ceiling Thickness: 5/8" Standard; Other Options\*
- Weight without module: 1 1/4 lb
- Ceiling Cut-Out: 9" x 6 3/4"



Ordering Information

Example: XSR11/Xm30/25c/30K/3500/WH/WH/SL

Fixture	Module	Beam Spread	CCT / Lumens	Options + Accessories
XSR11	Xm30	COB-optic	25K* / 2000	SFR* - Spray Foam Rated
		15c	27K / 2150	HL - Honeycomb Louver
		25c	30K / 2300	SL - Linear Spread
		40c	30m* / 2300	SP - Prismatic Spread
			35K* / 2300	SS - Solite Spread
			35m* / 2300	More Accessories Available
			40K* / 2300	
		18c	25K* / 2800	
		25c	27K / 3135	
		40c	30K / 3300	
		60c	30m* / 3300	
			35K* / 3300	
			35m* / 3300	
			40K* / 3300	
		Multi-optic	27K* / 3500	
		15	30K / 3500	
		25	30v / 3500	
		40	35K* / 3500	
		60	40K* / 3500	
			27K* / 5000	
			30K / 5000	
			30v / 5000	
			35K* / 5000	
			40K* / 5000	

Trim Finish

Die-cast, Powder Coated  
 WH / WH - White Module, Interior + Flange  
 BK / BK - Black Module, Interior + Flange  
 BK / WH\* - Black Module + Interior, White Flange  
 PW / PW\* - Perfect White Module, Interior + Flange  
 BK / PW\* - Black Module + Interior, Perfect White Flange

\*Consult factory for lead time and availability

# XSR12 | Xm30

SUPER HIGH OUTPUT | 2-HEAD  
SEMI RECESSED MULTIPLE

PROJECT \_\_\_\_\_

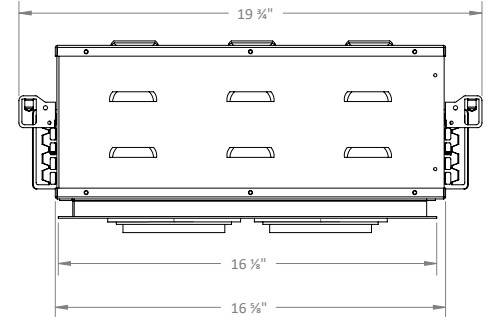
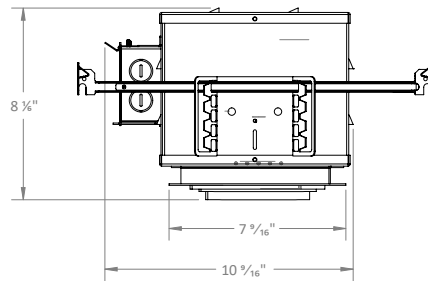
TYPE \_\_\_\_\_

SPECIFICATION \_\_\_\_\_

- Max Ceiling Thickness: 5/8" Standard; Other Options\*
- Weight without module: 3 lb
- Ceiling Cut-Out: 6 3/4" x 15"

## XSR12: DISCONTINUED MODEL

Consult factory for limited availability.



### Ordering Information

Example: XSR12/Xm30/25-25/30K/3500/WH/WH/SL-SL

1		-		2	
Fixture	Module	Beam Spread	CCT / Lumens	Options + Accessories	
XSR12	Xm30	COB-optic	25K* / 2000	SFR* - Spray Foam Rate	
		15c	27K / 2150	HL - Honeycomb Louver	
		25c	30K / 2300	SL - Linear Spread	
		40c	30m* / 2300	SP - Prismatic Spread	
			35K* / 2300	SS - Solite Spread	
			35m* / 2300	More Accessories Available	
			40K* / 2300		
		18c	25K* / 2800		
		25c	27K / 3135		
		40c	30K / 3300		
		60c	30m* / 3300		
			35K* / 3300		
			35m* / 3300		
			40K* / 3300		
		Multi-optic	27K* / 3500		
		15	30K / 3500		
		25	30v / 3500		
		40	35K* / 3500		
		60	40K* / 3500		
			27K* / 5000		
			30K / 5000		
			30v / 5000		
			35K* / 5000		
			40K* / 5000		

#### Trim Finish

- Die-cast, Powder Coated
- WH / WH - White Module, Interior + Flange
- BK / BK - Black Module, Interior + Flange
- BK / WH\* - Black Module + Interior, White Flange
- PW / PW\* - Perfect White Module, Interior + Flange
- BK / PW\* - Black Module + Interior, Perfect White Flange

\*Consult factory for lead time and availability

# XSR13 | Xm30

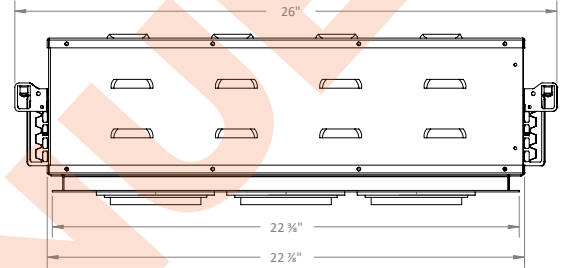
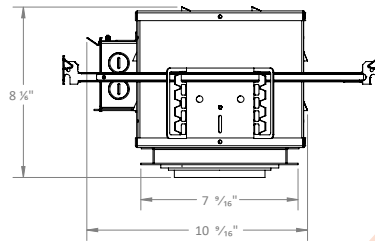
SUPER HIGH OUTPUT | 3-HEAD  
SEMI RECESSED MULTIPLE

PROJECT \_\_\_\_\_

TYPE \_\_\_\_\_

SPECIFICATION \_\_\_\_\_

- Max Ceiling Thickness: 3/8" Standard; Other Options\*
- Weight without module: 4 1/4 lb
- Ceiling Cut-Out: 6 3/4" x 22"



Ordering Information

Example: XSR13/Xm30/25-25-25/30K/3500/WH/WH/SL-SL-SL

		1	2	3			1	2	3
		/	/	-	/	/	/	-	-
<b>Fixture</b> XSR13	<b>Module</b> Xm30	<b>Beam Spread</b>							
		COB-optic			<b>CCT / Lumens</b>				<b>Options + Accessories</b>
		15c			25K* / 2000				SFR* - Spray Foam Rated
		25c			27K / 2150				HL - Honeycomb Louver
		40c			30K / 2300				SL - Linear Spread
					30m* / 2300				SP - Prismatic Spread
					35K* / 2300				SS - Solite Spread
					35m* / 2300				More Accessories Available
					40K* / 2300				
		18c			25K* / 2800				
		25c			27K / 3135				
		40c			30K / 3300				
		60c			30m* / 3300				
					35K* / 3300				
					35m* / 3300				
					40K* / 3300				
		Multi-optic			27K* / 3500				
		15			30K / 3500				
		25			30v / 3500				
		40			35K* / 3500				
		60			40K* / 3500				
					27K* / 5000				
					30K / 5000				
					35K* / 5000				
					40K* / 5000				

Trim Finish

- Die-cast, Powder Coated
- WH / WH - White Module, Interior + Flange
- BK / BK - Black Module, Interior + Flange
- BK / WH\* - Black Module + Interior, White Flange
- PW / PW\* - Perfect White Module, Interior + Flange
- BK / PW\* - Black Module + Interior, Perfect White Flange

\*Consult factory for lead time and availability

# XSR | Xm30

## SUPER HIGH OUTPUT SEMI RECESSED MULTIPLE

PROJECT \_\_\_\_\_

TYPE \_\_\_\_\_

SPECIFICATION \_\_\_\_\_

**PHOTOMETRIC DETAILS | baseline X output multiplier X cri-cct multiplier = final output**

**COB OPTIC: Baseline for 36 W,  
3300 lumens, 80+ CRI, 3000K**

**Xm30/15c/30K/3300**

Input Power: 36.4 W  
Lumens: 3291 lm  
Efficacy: 91 lm/W  
CBCP: 17300 cd  
Beam Angle: 16.1°  
Field Angle: 33.6°  
Spacing Criteria: 0.28

∠	0°	45°	90°
0°	17300	17300	17300
5°	12927	12605	12670
10°	5898	5641	5689
15°	2283	2214	2214
20°	1029	1006	986
25°	492	476	464
30°	232	225	225
35°	123	122	125
40°	81	80	82
45°	59	58	58

**Xm30/25c/30K/3300**

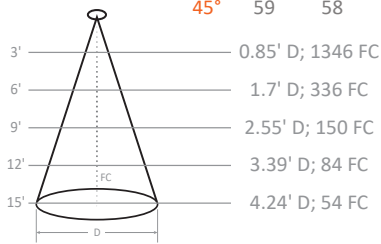
Input Power: 36.3 W  
Lumens: 3248 lm  
Efficacy: 89 lm/W  
CBCP: 10041 cd  
Beam Angle: 22.3°  
Field Angle: 44.8°  
Spacing Criteria: 0.39

∠	0°	45°	90°
0°	10041	10041	10041
5°	8830	8696	8558
10°	5862	5729	5575
15°	3143	3058	2958
20°	1477	1444	1381
25°	694	678	645
30°	342	334	319
35°	176	174	167
40°	100	100	98
45°	63	63	62

**Xm30/40c/30K/3300**

Input Power: 36.3 W  
Lumens: 3190 lm  
Efficacy: 88 lm/W  
CBCP: 4346 cd  
Beam Angle: 37.2°  
Field Angle: 67.1°  
Spacing Criteria: 0.67

∠	0°	45°	90°
0°	4343	4343	4343
5°	4182	4192	4169
10°	3632	3666	3629
15°	2828	2872	2831
20°	1957	1995	1959
25°	1202	1227	1198
30°	670	679	663
35°	354	358	350
40°	189	192	187
45°	108	110	108



**Xm30/15m/30K/5000**

Input Power: 44.9 W  
Lumens: 5136 lm  
Efficacy: 114 lm/W  
CBCP: 45736 cd  
Beam Angle: 16.6°  
Field Angle: 30.5°  
Spacing Criteria: 0.29

∠	0°	45°	90°
0°	45685	45685	45685
5°	37283	35831	34881
10°	17375	16594	15858
15°	5326	4964	4269
20°	1801	1691	1358
25°	804	769	692
30°	471	457	418
35°	293	279	263
40°	221	201	187
45°	160	152	144

**Xm30/25m/30K/5000**

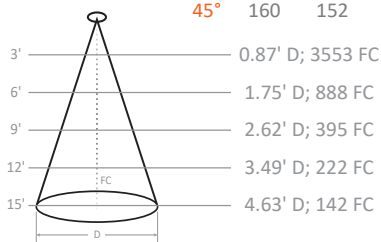
Input Power: 43.8 W  
Lumens: 5077 lm  
Efficacy: 116 lm/W  
CBCP: 27200 cd  
Beam Angle: 22.2°  
Field Angle: 40.6°  
Spacing Criteria: 0.39

∠	0°	45°	90°
0°	27160	27160	27160
5°	24314	22874	22029
10°	16228	14490	13442
15°	7965	6732	6171
20°	3047	2367	2162
25°	1064	875	801
30°	488	442	398
35°	299	278	255
40°	204	192	184
45°	145	142	138

**Xm30/40m/30K/5000**

Input Power: 43.8 W  
Lumens: 4721 lm  
Efficacy: 108 lm/W  
CBCP: 8325 cd  
Beam Angle: 40.8°  
Field Angle: 73.0°  
Spacing Criteria: 0.74

∠	0°	45°	90°
0°	8316	8316	8316
5°	7932	8001	7964
10°	7033	7214	7046
15°	5785	5994	5878
20°	4268	4430	4461
25°	2791	2890	3035
30°	1659	1700	1859
35°	933	956	1079
40°	538	554	626
45°	328	337	366



**OUTPUT MULTIPLIER**

Package	Optic	Multiplier
23 W 2300 lm Xm30 COB-optic	15°	0.67
	25°	0.67
	40°	0.67

**CRI-CCT MULTIPLIER**

CRI	CCT	Multiplier
8 (80+)	2200K	0.86
	2500K	0.91
	2700K	0.96
	3000K	1.00
	3500K	1.03
9	4000K	1.05
	2200K	0.70
	2500K	0.77
	2700K	0.83
M (MonoWhite)	3000K	0.86
	3500K	0.89
	4000K	0.91
V (VioLight)	3000K	0.88
V (VioLight)	3000K	0.89

**OUTPUT MULTIPLIER**

Package	Optic	Multiplier
30 W 3500 lm Xm30 Multi-optic	15°	0.70
	25°	0.70
	40°	0.70

# XSR | Xm30

## SUPER HIGH OUTPUT SEMI RECESSED MULTIPLE

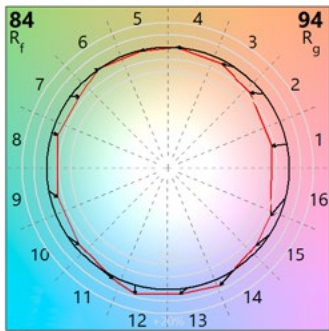
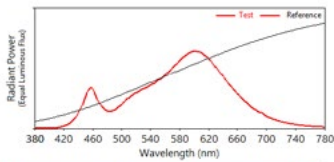
PROJECT \_\_\_\_\_

TYPE \_\_\_\_\_

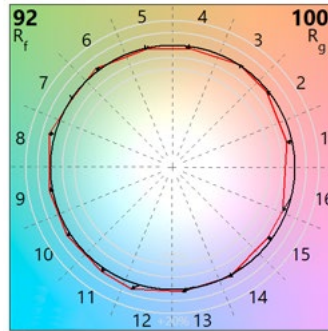
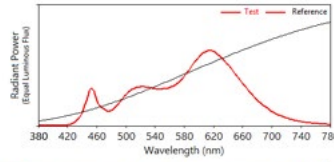
SPECIFICATION \_\_\_\_\_

### TM30 COLOR REPORTS

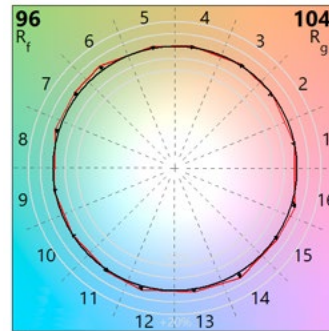
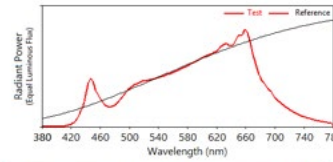
- 3000K with 80+ CRI
- $R_f = 84$ ;  $R_g = 94$
- $R_A = 82$ ;  $R_9 = 11$



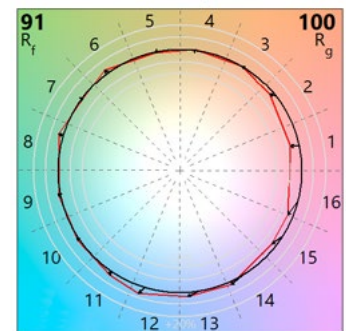
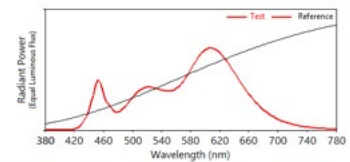
- 3000K with 90+ CRI
- $R_f = 92$ ;  $R_g = 100$
- $R_A = 93$ ;  $R_9 = 56$



- 3000K with 97+ CRI
- $R_f = 96$ ;  $R_g = 104$
- $R_A = 97$ ;  $R_9 = 98$



- 3000K with MonoWhite
- $R_f = 91$ ;  $R_g = 100$
- $R_A = 91$ ;  $R_9 = 42$



**WARNING:** Not for use in Semi enclosed luminaires. Risk of electric shock. Use in an indoor, dry location only. This device is not intended for use with emergency exit fixtures or emergency exit lights. May not be compatible with all dimmers; please visit [solais.com/dimming](http://solais.com/dimming) for up-to-date dimmer compatibility information.  
**NOTES:** This device complies with Part 15 of the FCC Rule. This product may cause interference with other devices. If interference occurs, change the locations of the products involved. **Compatible on 120V systems.**



Luxiance utilizes active cooling to remove heat from the LED system - allowing Solais LED lamps to operate cooler, resulting in superior life, light output and performance.



X-Changeable is our all-in-one technology that incorporates the optics, LEDs, driver and power within a replaceable module. This allows you to change the lumen output, color temperature, beam angle and trim color with ease.



Thermal Throttle – In the event that Solais products begin to overheat, they will undetectably dim themselves to protect your technology investments.



VioLight radiates superior quality, enhancing colors in merchandise, making colors more vibrant and offering a truly competitive LED replacement for CMH-like crispness.