

PROJECT

TYPE

SPECIFIER

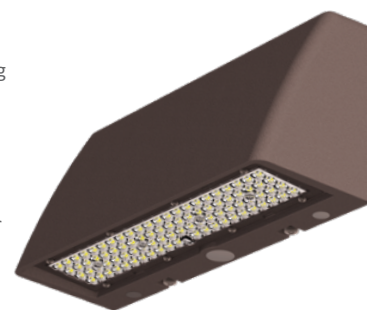
MEMO

ORDERING CODE BREAKDOWN

MEDIUM TRAPEZOID WALL PACK
ARCHITECTURAL LED FIXTURE

MAIN FEATURES

- A down illumination trapezoidal wall pack to provide clean aesthetics, industry-leading performance, a recessed light engine for high angle cutoff, precise optical uniformity, and visually comfortable optics.
- A die-cast, aluminum alloy housing with super durable polyester powder coating for optimal thermal performance, weather resistance, gloss/color retention, and exceptional corrosion resistance
- 2,000 lumens at 10W to 12,000 lumens at 100W
- Delivering up to 160 lm/W at 4000K and 90 CRI
- Integral photocells, motions sensors, EM battery backup options
- Surface Mount Conduit Box option for retrofit applications



FIXTURE	LUMENS	OPTIC	CRI	CCT	FINISH	FIXTURE OPTIONS	FIELD OPTIONS
TWPM	1 ¹² : 1,000 lm; 11W	PT2 : Precision TIR Type II	9 : 90 CRI	18* : 1800K	SBZ : Bronze (RAL8019)	EM1 ³ : Emergency Battery Backup (1-8 lumen pkg.)	SMCB : Surface Mount Conduit Box
	2 ¹² : 2,000 lm; 16W	PT3 : Precision TIR Type III		22* : 2200K	SBK : Black (RAL9017)	EM2 ³ : Emergency Battery Backup (10-12 lumen pkg.)	
	3 ¹² : 3,000 lm; 23W	PFT : Precision TIR Type IV Forward Throw		27* : 2700K	SWH : White (RAL9003)	HL : EM Heater Light	
	4 ² : 4,000 lm; 29W	VCD ² : Visually Comfortable Diffused Lens		30 : 3000K		PB : Button-eye Photocell	
	6 ² : 6,000 lm; 45W			35* : 3500K		MS : PIR Motion Sensor Bi-level Dimming	
	7 : 7,500 lm; 55W			40 : 4000K		1PS : Parallel 10kV/5kA Surge Protection	
	8 : 8,500 lm; 65W			50 : 5000K		2PF : Dual Power Feed	
	10 : 10,000 lm; 80W					2DR : Dual Drivers	
	12 : 12,000 lm; 100W					CC* : Coastal Construction	

Notes: *Extended lead times may apply. Consult factory for more information.

¹ 120-277V only; 347V unavailable

² VCD Diffused optic available with lumen packages 1-6

³ Use EM1 for lumen packages 1-8, and EM2 for lumen packages 10-12. See descriptions on page 2.

ELECTRICAL

- Isolated MVOLT (120V-347V) standard; 120-277V only for lumen packages 1, 2, and 3 (1,000-3,000lm)
- Emergency Battery Backup option available:
 - EM1: -40°C Cold Pack for lumen packages 1-8
 - EM2: -20°C Cold Pack for lumen packages 10-12

OPTICS + PERFORMANCE

- 90 CRI standard for improved safety through higher visual acuity and color rendering
- Up to 160 lumens per watt (at 4000K 90CRI)
- 1,000 to 12,000 lumen packages (11-100W)
- 4 customized distributions:
 - Visually Comfortable Diffused (VCD) - lumen packages 2-6
 - Precision Type II (PT2) - lumen packages 6-12
 - Precision Type III (PT3) - lumen packages 6-12
 - Precision Type IV Forward Throw (PFT) - lumen packages 6-12

MOUNTING

- Single-piece design allows for simple and efficient wall mounting
- Surface mount conduit box (SMCB) option available for retrofit applications - equipped with leveling bubble for easy installation

CONSTRUCTION + FINISH

- One-piece die cast aluminum alloy housing void of exterior features provides a trapezoidal architectural aesthetic while optimizing heat management for long life
- Stainless steel 316 hardware to hold up in extreme weather
- Polyester super-durable powder coating for superior gloss maintenance, color retention, and weather resistance
- Standard finishes meets salt-spray to 5,000 hours per ASTM B117
- Standard finishes (*consult factory for custom*):
 - Bronze (SBZ): RAL 8019
 - Black (SBK): RAL 9017
 - White (SWH): RAL 9003

CONTROLS

- Dim-to-off 0-10V dimming standard
- Button-eye photocell (PB)
- PIR Motion Sensor (MS) - bi-level dimming at 100%/35%; for 8-20' mounting heights on switched circuits with external dusk to dawn switching

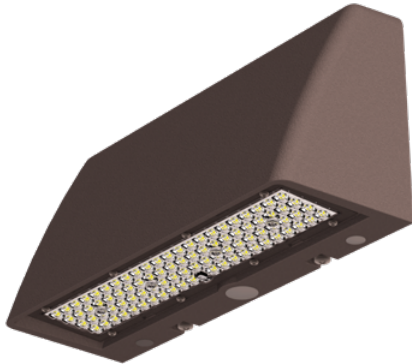
LISTINGS

- Title 20 certified
- IDA Dark Sky listed
- cETLus Listed in wet locations for down illumination

WARRANTY

- 5-year warranty

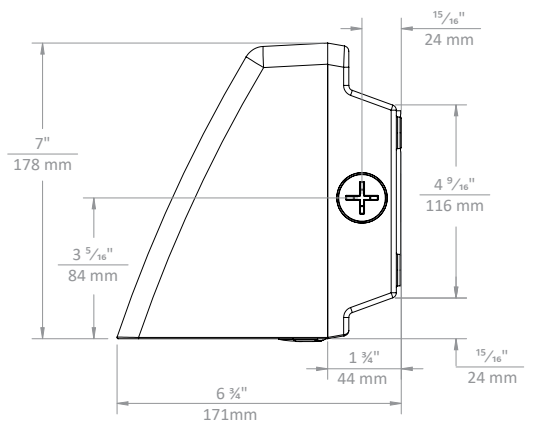
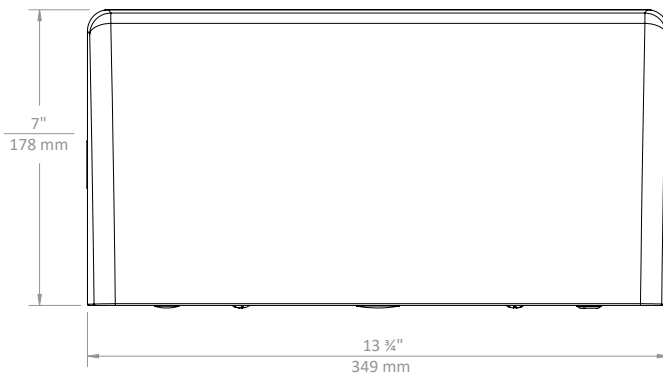
DIMENSIONAL DETAILS



Side view



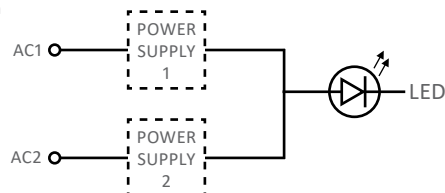
Side view with Surface Mount Conduit Box (SMCB)



OPTIONS

2PF : Dual Power Feed

Provides two separate drivers which can be wired independently with two sets of leads exiting the fixture



2DR : Dual Drivers

Provides two separate drivers at half power each, with a single set of leads exiting the fixture

