

PROJECT

TYPE

SPECIFIER

MEMO

ORDERING CODE BREAKDOWN

LCM LUCIE

SCATTO 48V TRACK SYSTEM  
3" DOWN WALLWASH TRACKHEAD

MAIN FEATURES

- 95 CRI Standard
- 359° rotation; 0-90° head tilt
- Designed for even, top-to-bottom illumination
- Delivering up to 2300 lumens at 24W
- Custom integrated driver meets IEEE 1789-2015 Low Risk flicker category across dimming range
- Custom TIR optic platform to ensure smooth beams and excellent light control with no need for a solite lens
- 48V low voltage locking adapter trackhead designed for use with Solais® Scatto™ track systems



FIXTURE	VOLTAGE	BEAM SPREAD	CRI	CCT	LUMENS	FINISH	MOUNTING
LCM : Medium Lucie	3 : 48V, 1% 0-10V dimming	DW : Downlight Wallwash	9 : 95 CRI	22 <sup>2</sup> : 2200K	2000 : 19W	PW : Perfect White	SC1 : 1" stem
			H <sup>1</sup> : 98+ CRI	25 <sup>2</sup> : 2500K 27 : 2700K 30 : 3000K 35 : 3500K 40 : 4000K 50 : 5000K	2300 : 24W	BK : Black SV : Silver BA : Brushed Aluminum BG : Brushed Gold GD : Gold BZ : Bronze CR : Chrome RC : Rose Gold Chrome BC : Black Chrome GC : Gold Chrome	SC2 : 2.5" stem

Notes: <sup>1</sup>98+ CRI produces less measured lumens. See photometric data.  
<sup>2</sup>2200K, 2500K are only available with '9' and are 90+ CRI  
Consult factory for stem custom orders

## LCM LUCIE

### SCATTO 48V TRACK SYSTEM 3" DOWN WALLWASH TRACKHEAD

#### MOUNTING + ELECTRICAL + CONTROLS

- 48V: <1% 0-10V dimming
- Wiring cables for power feeds must be 5mm minimum
- SC1: 1" stem length;  
*Compatible with SCST, SCRF, SCRT, SCSM, SCSH, SCCR and upper emission of SCUD Scatto tracks*
- SC2: 2.5" stem length;  
*Compatible with all Scatto tracks but required for SCTM, SCLT, SCLH, and lower emission of SCUD*
- Custom stem lengths available; consult factory

#### RATINGS + CERTIFICATIONS

- IP20 and IK08 rated
- DLC listings (*family code: IIIIONW*)
- 120V: UL Listed for dry location (*E487826*), CEC Title 24, JA8 + JA10 compliant
- 277V: UL listing for dry location (*E487826*)

#### OPTICS + PERFORMANCE

- DW : Downlight Wallwash for even, top-to-bottom illumination
- 2 performance packages
  - 19W; 2000 lumens
  - 24W; 2300 lumens
- Color Temperatures
  - 95 CRI: 2200K, 2500K, 2700K, 3000K, 3500K, 4000K, 5000K
  - 98+ CRI: 2700K, 3000K, 3500K, 4000K, 5000K
- Fixture life:
  - Full power: 50,000 hours
  - 75% power: 100,000 hours
  - Below 50% power: 125,000 hours
- LED 90% lumen maintenance (LM<sub>90</sub>): 60,000 hours

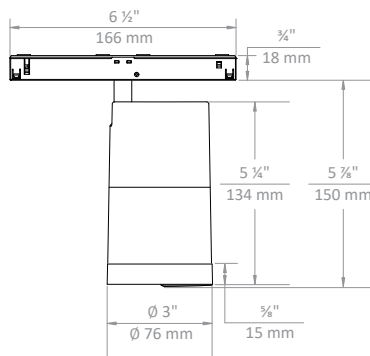
#### CONSTRUCTION + FINISH

- Weight: 13.4 oz.
- Die-cast aluminum alloy housing for optimal thermal performance
- Finishes:
  - Available in painted, polished, and brushed aluminum; consult factory for custom finishes
  - White: RAL 9003
  - Black: RAL 9005
  - Silver: RAL 7001
- Solais Signature Series finishes also available

#### WARRANTY

- 5-year warranty

#### DIMENSIONAL DETAILS



#### FINISHES

##### Standard Finishes



##### Mix + Match



##### Signature Series Finishes



PROJECT

TYPE

LCM LUCIE

SCATTO 48V TRACK SYSTEM  
3" DOWN WALLWASH TRACKHEAD

PHOTOMETRIC DETAILS | **baseline X output multiplier X cri-cct multiplier = final output**  
Baseline data shown below for 24W, 2300 lumens, 95+ CRI , 3000K

COMING SOON

ISOMETRIC DETAIL

