

PROJECT

TYPE

SPECIFIER

MEMO

ORDERING CODE BREAKDOWN

BDL4 Wildlife

BARITONE NEW CONSTRUCTION  
4" ROUND + SQUARE DOWNLIGHT

MAIN FEATURES

- Designed for new construction installations
- Meets DLC direct emission - Amber wildlife product requirements with zero radiation below 560nm
- Delivering 1500 lumens at 15W
- Modular platform with easy maintenance for individual components featuring visual indicator to ensure proper installation prior to module installation.
- Dimming to 1% via Standard Phase-cut or 0-10V or optional 0.1% 0-10V or DALI-2
- Custom TIR optic platform to ensure excellent light control
- Super-shallow installation height of <2.5" and non-conductive baffles



Round and square with (SD/PW)  
Specular Baffle + White Flange

/ / / / / / / / / +

FIXTURE	MODULE	CEILING THICKNESS	BAFFLE	FLANGE	BEAM SPREAD	LEDS	LUMENS	POWER SUPPLY	TRAY OPTIONS	FIELD OPTIONS
BDLR : Round	4 : 4"	1 : 0.50"-1.5"	PW : Perfect White	PW : Perfect White	FL : Flood (40°)	AMB : de-Amber Wildlife and Turtle Safe	1500 : 15W	UNV : 120-277V, phase-cut/0-10V dimming	NCT : Standard Hanger Bars	CAS10 : 0-10V Casambi Wireless Node
BDLS : Square			BK : Black	BK : Black					NCC : Commercial Hanger Bars with vertical adjustment	CASPC : Phase-cut Casambi Wireless Node
			SD : Semi-diffused	SD : Semi-diffused						

Notes: Emergency test switch must be remote mounted with SD flange finish; Consult factory for longer EM runtime options

## BDL4 Wildlife

BARITONE NEW CONSTRUCTION  
4" ROUND + SQUARE DOWNLIGHT

### OPTICS + PERFORMANCE

- FL: Flood - 40°
- 15W; 1500 lumens
- Wildlife and turtle safe, specialty de-amber LED
- Zero radiation/illumination below 560nm
- Dominant wavelength at 605nm; between 590-610nm as required
- Full Width at Half Maximum (FWHM) at 16nm; ≤ 20nm as required
- Fixture life:
  - Full power: 50,000 hours
  - 75% power: 100,000 hours
  - Below 50% power: 125,000 hours
  - LED 90% lumen maintenance: 60,000 hours

### CONSTRUCTION + FINISH

- Weight 3.75 lbs.
- Galvanized steel tray
- Single-piece die-cast aluminum heatsink powdercoated with polyester powder
- Non-conductive baffles; "Dead front" with semi-diffused specular baffle AND flange (SD/SD)

### TRIM + BAFFLE OFFERINGS

- Ceilings: gypsum, wood, t-bar, specialty, other
- Ceiling Thicknesses: ½" - 1 ½"
- Standard baffle + flange colors (*CF for custom*):
  - White: RAL 9003
  - Black: RAL 9005
  - Semi-diffused Specular (*semi-diffused specular flange only available with semi-diffused specular baffle*)

### POWER + CONTROLS

- Universal Input: 120-277V
- Proprietary Solais driver provides phase-cut or 0-10V dimming <1%
- Preinstalled 10W emergency battery backup with built-in, integral trim test switch option; no need for remote wiring
- Casambi and Lutron wireless controls available
- Consult factory for longer EM runtime options.

### RATINGS + CERTIFICATIONS

- IC rated up to 2500 lumens/22W (without enclosure), Non-IC 3000+ lumens/25+W
- Emergency Battery pack is California Title 20 compliant
- ETL listed; conforming to UL safety standards
- Wet location rated; approved for use in showers and outdoors with covered canopy
- Contain no lead or mercury

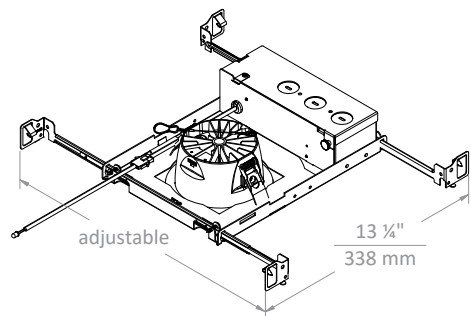
### WARRANTY

- 5-year warranty

## HANGING BARS DIMENSIONAL DETAILS

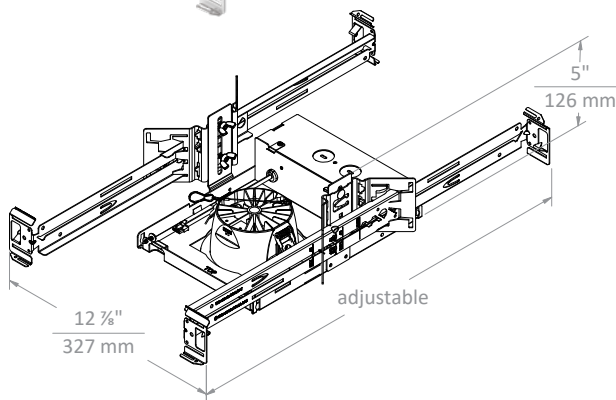
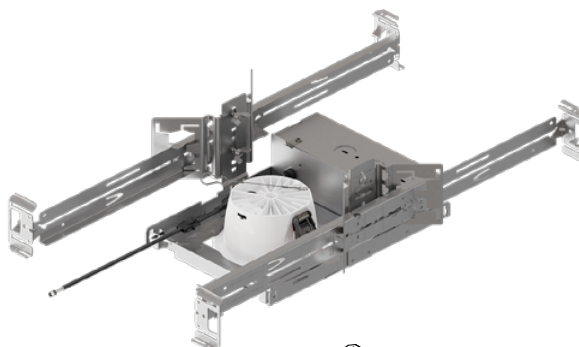
### Standard Hanging Bars (NCT)

- NCT (5.7 lbs.)
- Standard mounting brackets:  
14" Minimum to 24" Maximum



### Commercial Hanging Bars (NCC)

- NCC (7.2 lbs.)
- Commercial mounting brackets:  
10" Minimum to 24" Maximum  
with 2 3/4" vertical adjustment

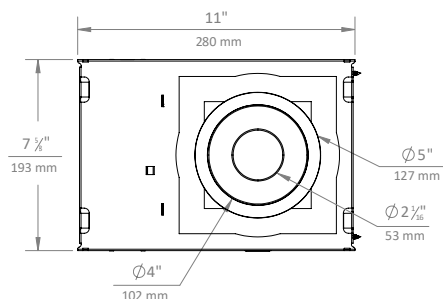
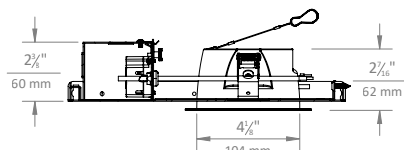


## BDL4 Wildlife

BARITONE NEW CONSTRUCTION  
4" ROUND + SQUARE DOWNLIGHT

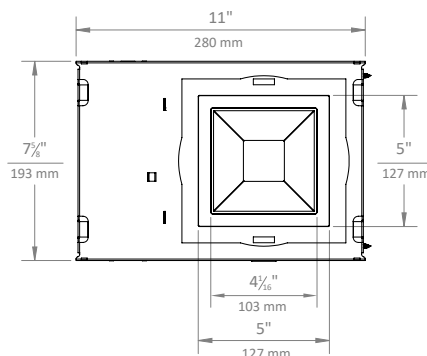
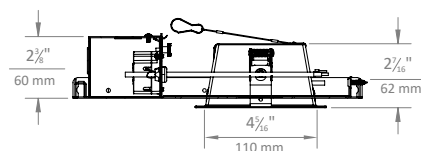
### BDLR4 - ROUND DIMENSIONAL DETAILS

Ceiling Cutout : 4 3/8" Diameter



### BDLS4 - SQUARE DIMENSIONAL DETAILS

Ceiling Cutout : 4 1/2" x 4 1/2"



- NCT Standard mounting brackets: 14" Minimum to 24" Maximum
- NCC Commercial mounting brackets: 10" Minimum to 24" Maximum with 2 3/4" vertical adjustment

### BAFFLE + FLANGE DETAIL

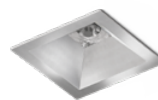
Semi-Diffused Specular Baffle  
+ Perfect White Flange  
(SD/PW)

Perfect White  
Baffle + Flange  
(PW/PW)

Black  
Baffle + Flange  
(BK/BK)

Black Baffle +  
Perfect White Flange  
(BK/PW)

Semi-Diffused Specular  
Baffle + Flange  
(SD/SD)

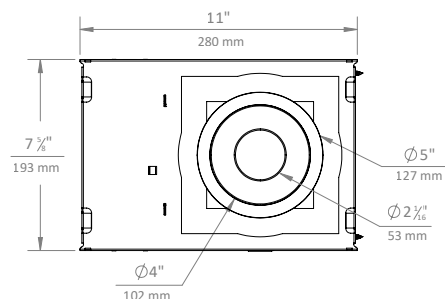
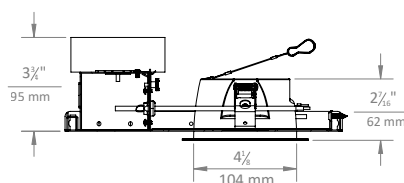
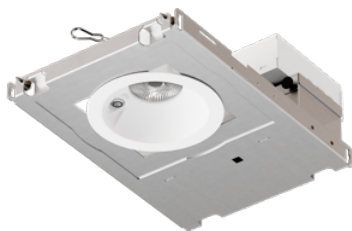


## BDL4 Wildlife

BARITONE NEW CONSTRUCTION  
4" ROUND + SQUARE DOWNLIGHT

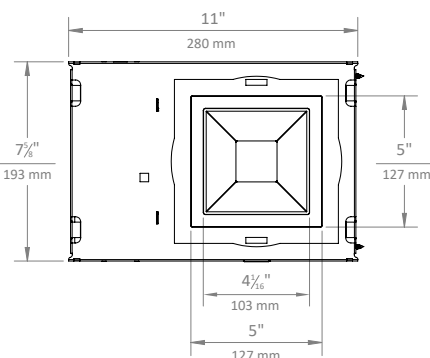
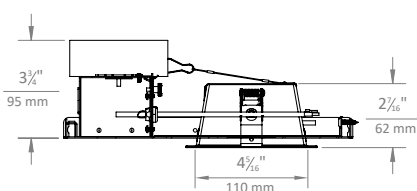
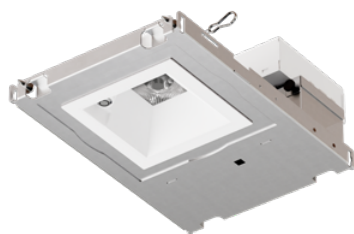
### BDLR4 - ROUND DIMENSIONAL DETAILS (WITH EMERGENCY BATTERY BACKUP)

Ceiling Cutout : 4 3/8" Diameter



### BDLS4 - SQUARE DIMENSIONAL DETAILS (WITH EMERGENCY BATTERY BACKUP)

Ceiling Cutout : 4 1/2" x 4 1/2"



- NCT Standard mounting brackets: 14" Minimum to 24" Maximum
- NCC Commercial mounting brackets: 10" Minimum to 24" Maximum with 2 3/4" vertical adjustment

### BAFFLE + FLANGE DETAIL (WITH INTEGRAL EM)

Semi-Diffused Specular Baffle  
+ Perfect White Flange  
(SD/PW)

Perfect White  
Baffle + Flange  
(PW/PW)

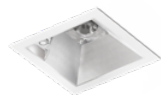
Black  
Baffle + Flange  
(BK/BK)

Black Baffle +  
Perfect White Flange  
(BK/PW)

Semi-Diffused Specular  
Baffle + Flange  
(SD/SD)



Remote EM required for  
Semi-Diffused Specular  
Baffle + Flange



Remote EM required for  
Semi-Diffused Specular  
Baffle + Flange

## BDL4 Wildlife

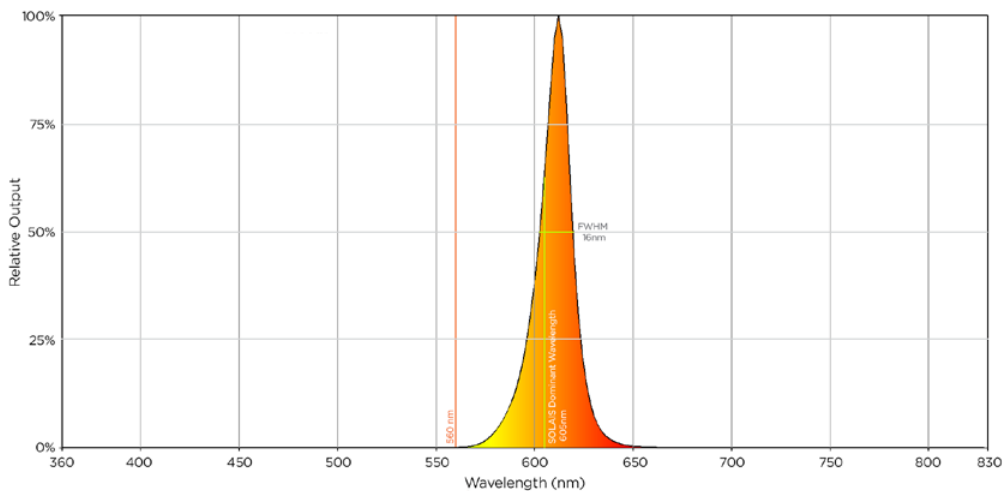
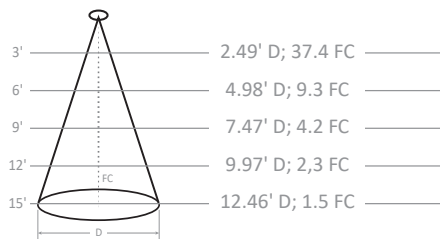
BARITONE NEW CONSTRUCTION  
4" ROUND + SQUARE DOWNLIGHT

### PHOTOMETRIC + AMBER DETAILS

#### FL - 43° Flood

Input Power: 15.4 W  
Lumens: 330 lm  
Efficacy: 21.4 lm/W  
CBCP: 481 cd  
Beam Angle: 45.1°  
Field Angle: 83.2°  
Spacing Criteria: 0.83

∠	0°	45°	90°
0°	481	481	481
5°	471	465	463
10°	436	430	434
15°	378	378	379
20°	288	290	295
25°	195	197	202
30°	132	132	132
35°	83	84	84
40°	54	54	55
45°	35	36	37



- Zero radiation/illumination below 560nm
- Dominant wavelength at 605nm; between 590-610nm as required
- Full Width at Half Maximum (FWHM) at 16nm; ≤ 20nm as required